

# KLEEN-CUP®



## The Most Efficient and Sanitary Way to Keep Your Beverage Mixers Clean

- Minimizes risk of cross-contamination between mixer uses
- Prevents flavor transfers between beverages
- Easy to use and clean; dishwasher safe



Wiping down spindles with a rag invites cross-contamination.

 **san jamar®**  
smart. safe. sanitary.

[www.sanjamar.com](http://www.sanjamar.com)



### ANGLED, REPLACEABLE BRUSHES

effectively remove debris from spindles



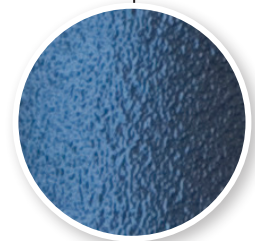
### DISHWASHER SAFE

Take out brushes and run cup and brushes through dishwasher, for thorough cleaning



### NOTCHED DESIGN

for easier spindle access



### DURABLE, OPAQUE, TEXTURED MATERIAL

portrays sanitary appearance and provides a secure grip

Item #	Description	Case Pack
KLC28C	8.75"h x 4.25"w x 4.5"	1
KLCBRUSH	Replacement Brushes	1 set of 3

**San Jamar**  
555 Koopman Lane  
Elkhorn, Wisconsin 53121  
USA  
T: +1.262.723.6133  
F: +1.262.723.4204  
info@sanjamar.com  
www.sanjamar.com

**San Jamar Canada**  
3300 Bloor Street West  
Center Tower, 11th Floor  
Suite 3140 Toronto, ON  
M8X 2X3  
CANADA  
T: +1.416.760.7367  
F: +1.416.207.2071  
canada@sanjamar.com

**San Jamar Europe**  
Schoorstraat 26a, bus 1  
2220 Heist op-den Berg  
BELGIUM  
T: +32 1522 8140  
F: +32 1522 8148  
emea@sanjamar.com

**San Jamar México**  
Av. Universidad #1377-701  
Colonia Axotla CP 01030  
Del. Alvaro Obregón  
MEXICO, D.F.  
T: +52 (55) 3626 0772  
F: +52 (55) 5273 4495  
mexico@sanjamar.com

